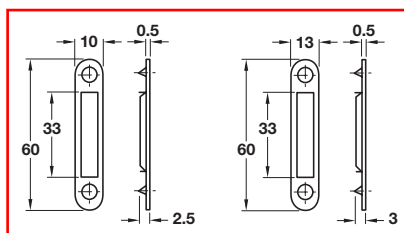


Striking plate

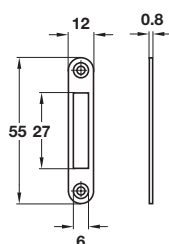


- > 10 and 13 mm widths
- > Steel
- > Order qty: Multiples of 10 pcs



Width	10 mm	13 mm
Nickel-plated	239.06.701	239.05.704
Brass-plated	239.06.505	239.05.508

Striking plate

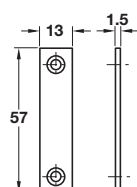


- > For recess mounting
- > Steel
- > Order qty: 1 pc



Finish	Cat. No.
Brass-plated	239.26.510

Striking plate

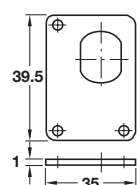


- > Screw fixing
- > Steel
- > Order qty: Multiples of 10 pcs



Finish	Cat. No.
Nickel-plated	239.26.703
Brass-plated	239.26.507

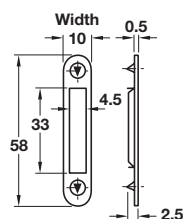
Locking plate



- > For cam locks with aperture pattern 19.7 x 17.5 mm
- > Steel
- > Order qty: Multiples of 10 pcs

Finish	Cat. No.
Galvanized	235.73.908

Striking plate

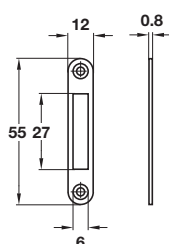


- > 10 and 13 mm widths
- > Steel
- > Order qty: Multiples of 10 pcs



Width	10 mm	13 mm
Nickel-plated	239.06.701	239.05.704
Brass-plated	239.06.505	239.05.508

Striking plate

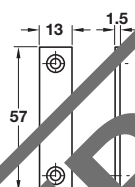


- > For recess mounting
- > Steel
- > Order qty: 1 pc



Finish	Cat. No.
Brass-plated	239.26.510

Striking plate

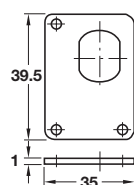


- > Screw fixing
- > Steel
- > Order qty: Multiples of 10 pcs



Finish	Cat. No.
Nickel-plated	239.26.703
Brass-plated	239.26.507

Locking plate



- > For cam locks with aperture pattern 19.7 x 17.5 mm
- > Steel
- > Order qty: Multiples of 10 pcs

Finish	Cat. No.
Galvanized	235.73.908