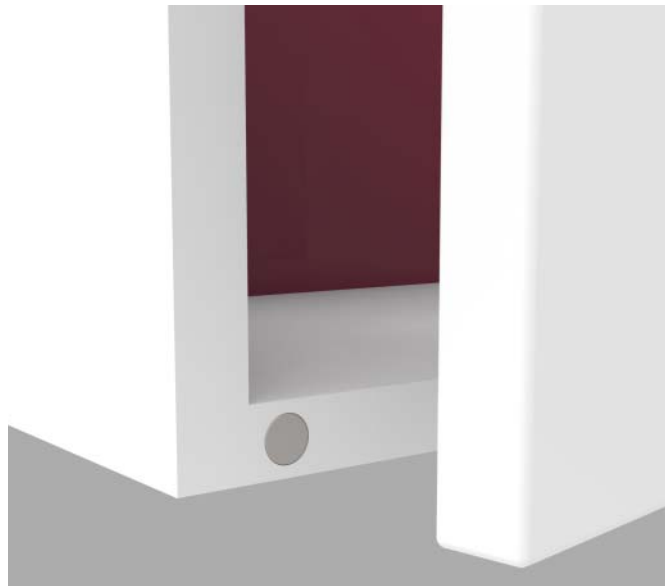


CATCHES

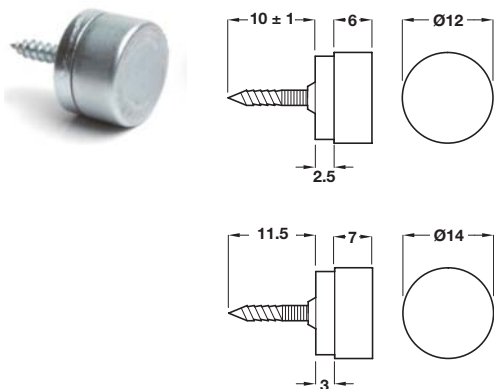
FLUSH MAGNETIC CATCHES

An elegant solution.

- > These high quality magnetic catches are:
Concealed from view
Constructed to provide a flush fit to any door of frame
Able to hold in-frame doors securely and quietly
- > The catches can be mounted within the woodwork so they are just visible, or mounted sub-flush so they can be totally invisible after filling and finishing
- > With any magnets the greater the gap between them the weaker the attractive force will become.
- > For best results we recommend **all** flush magnets are bonded into their fixing hole with a suitable contact adhesive



Elite magnetic catch, screw fixing

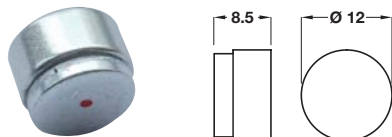


- > Magnet to be glued into a hole:
2 kg pull version to be glued into a Ø 12 hole
4 kg pull version to be glued into a Ø 14 hole
- > For a minimum wood thickness of 19 mm (unless the screw is removed)
- > One set consists of:
1x North magnet
1x South magnet
- > Neodymium
- > Order qty: Multiples of 5 sets



| Pull (approx.) | 2 kg | 4 kg |
|----------------|------------|------------|
| Finish | Cat. No. | |
| Nickel | 246.24.600 | 246.24.601 |

Elite magnetic catch, push fix



- > Magnet to be glued into Ø 12 mm hole
- > For a minimum wood thickness of 10 mm
- > North half - Door mounting
- > South half - Cabinet mounting
- > Neodymium
- > Order qty: Multiples of 10 pcs



> For suitable adhesives to fix these magnets see pages 471-472

| Magnet type | North | South |
|-------------|------------|------------|
| Finish | Cat. No. | |
| Nickel | 246.24.605 | 246.24.606 |

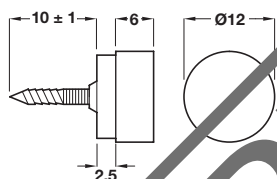
CATCHES

FLUSH MAGNETIC CATCHES

An elegant solution.

- > These high quality magnetic catches are:
Concealed from view
Constructed to provide a flush fit to any door of frame
Able to hold in-frame doors securely and quietly
- > The catches can be mounted within the woodwork so they are just visible, or mounted sub-flush so they can be totally invisible after filling and finishing
- > With any magnets the greater the gap between them the weaker the attractive force will become.
- > For best results we recommend **all** flush magnets are bonded into their fixing hole with a suitable contact adhesive

Elite magnetic catch, screw fixing

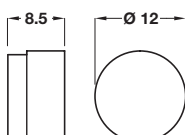


- > Magnet to be glued into a Ø 12 or Ø 15 mm hole for a minimum wood thickness of 19 mm (unless the screw is removed)
- > One set consists of:
1x North magnet
1x South magnet
- > Neodymium
- > Order qty: Multiples of 5 sets



| Pull (approx.) | 2 kg | 4 kg |
|----------------|------------|------------|
| Finish | Cat. No. | |
| Nickel | 246.24.600 | 246.24.601 |

Elite magnetic catch, push fix



- > Magnet to be glued into Ø 12 mm hole
- > For a minimum wood thickness of 10 mm
- > North half - Door mounting
- > South half - Cabinet mounting
- > Neodymium
- > Order qty: Multiples of 10 pcs



- > For suitable adhesives to fix these magnets see pages **471-472**

| Magnet type | North | South |
|-------------|------------|------------|
| Finish | Cat. No. | |
| Nickel | 246.24.605 | 246.24.606 |