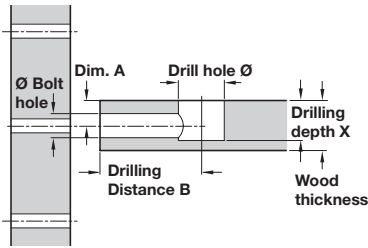
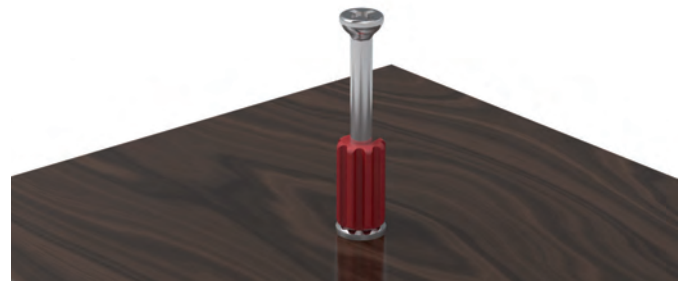


IXCONNECT MINIFIX 12 METAL HOUSINGS

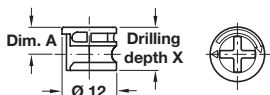
ixconnect



- Drill hole Ø** = Ø 12 mm for housings
- Drilling depth X** = depends on type of housing and wood thickness (see order columns for details)
- Drilling distance B** = choice of B 24 (24 mm) or B 34 (34 mm) drilling distance from drill-hole centre to panel front edge
- Bolt drill hole Ø** = Ø 7 or Ø 8 mm in panel front edge according to choice of connecting bolt



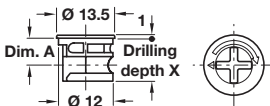
Minifix 12 housing, without rim



- > For wood thickness from 12 mm
- > Drive: PZ2 cross slot or flat blade
- > Zinc alloy
- > Order qty: Multiples of 100 pcs

For wood thickness from	Dim. A	Drilling depth X	Bright	Nickel-plated
12 mm	6.0 mm	9.5 ^{+0.2} mm	262.17.020	262.17.620

Minifix 12 housing, with rim



- > For wood thickness from 12 mm
- > Drive: PZ2 cross slot or flat blade
- > Zinc alloy
- > Order qty: Multiples of 100 pcs

For wood thickness from	Dim. A	Drilling depth X	Bright	Nickel-plated
12 mm	6.0 mm	9.5 ^{+0.2} mm	262.18.020	262.18.620



- > Minifix 12 connecting bolts, suitable for these zinc alloy housings are shown on pages **297-305**
- > Red jig for Minifix 12 and 15 housings are shown on **321-324**
- > Unitool drilling jig for Minifix 12 and 15 housings can be found on page **325-326**
- > Variantool-N drilling jig for drilling series-drilled holes for connecting bolts shown on page **322**
- > Minifix 15 zinc alloy housings shown on pages **294-295**