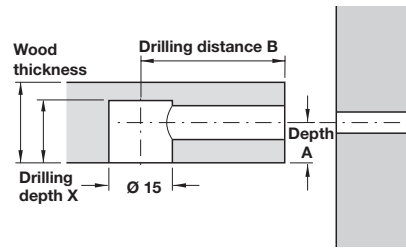


IXCONNECT MINIFIX INDUSTRY BOLTS

ixconnect

- > Minifix connecting bolts **A** and **B**:
Can be screwed directly into a $\varnothing 5$ mm pre-drilled hole
For double-sided constructions
- > Minifix connecting bolts **C**:
With M6 thread are used in conjunction with sleeves or dowels for installation in $\varnothing 8$ mm or $\varnothing 10$ mm pre-drilled holes
For single-sided constructions



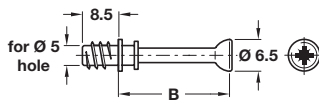
Cross slot
Tighten with PZ2 screwdriver
only (cross slot size 2)



Combination slot
Tighten with PZ2 screwdriver
or flat bladed screwdriver

Minifix M100 connecting bolt

A

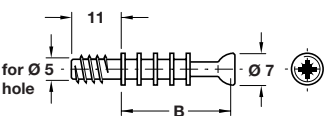


- > For direct, screw-in installation in $\varnothing 5$ mm holes
- > With special thread
- > Steel
- > Order qty: Multiples of 100 pcs

Drilling distance B	24 mm	34 mm
Bright	262.27.611	262.28.611
Galvanized	262.27.618	262.28.618

Minifix M200 connecting bolt

B

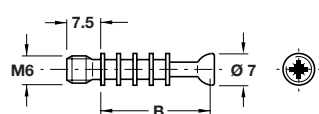


- > For direct, screw-in installation in $\varnothing 5$ mm holes
- > With special thread
- > Steel
- > Order qty: Multiples of 100 pcs

Drilling distance B	24 mm	34 mm
Galvanized	262.27.627	262.28.624

Minifix M200 connecting bolt

C



- > Screw in sleeves and dowels
with M6 internal thread are
shown on page 420

- > With M6 thread, for screwing into sleeves or dowels for
installation in $\varnothing 8$ mm or $\varnothing 10$ mm holes
- > Steel
- > Order qty: Multiples of 100 pcs

Drilling distance B	34 mm
Galvanized	262.28.642