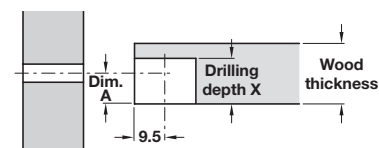
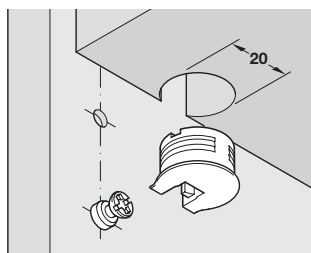


IXCONNECT RAFIX-20 TAB CONNECTORS

ixconnect

- > Rafx TAB is an extension of the Rafx range for shelf connections:
- > The housing is pressed into the shelf and pushed onto a Rafx Ø 7 mm connecting bolt, selected from the general range
- > The tapered surfaces of Rafx TAB ensure an exceptionally tight connection
- > Rafx TAB features a catch which prevents the shelf from moving upwards away from the Rafx connecting bolt
- > For shelf and support panels, the drop-down shelves can be fastened using Rafx TAB alone
- > For tall cabinets, we recommend using Rafx housings, pages **310-311**



Drilling depth X = depends on type of housing and wood thickness (see order columns for details)

Dimension A = 1/2 wood thickness (see order columns for details)

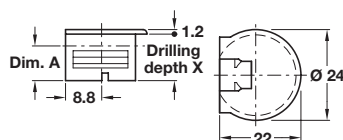


Cross slot
Tighten with P22 screwdriver only (cross slot size 2)



Combination slot
Tighten with P22 screwdriver or flat bladed screwdriver

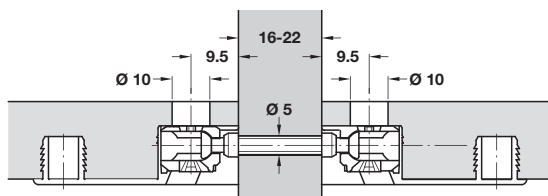
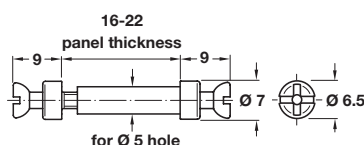
Rafx-20 TAB housing, plastic, with ridge



- > For wood thicknesses from 16 mm
- > Plastic housing
- > Order qty: Multiples of 100 pcs

For wood thicknesses from	Dim. A	Drilling depth X	White	Brown	Black	Beige
16 mm	8.0 mm	12.7 mm	263.09.731	263.09.133	263.09.339	263.09.437

Rafx 20-TAB double-ended bolt



- > For installation through Ø 5 mm holes
- > For double-sided installation
- > For panel thicknesses 16-22 mm
- > Steel
- > Order qty: Multiples of 100 pcs

Finish	Cat. No.
Bright	263.24.041
Galvanized	263.24.943



- > Rafx-20 connecting bolts, suitable for these housings are shown on pages **313-315**
- > Red jig for Rafx-20 housings are shown on **321-324**
- > Unitool drilling jig for Rafx-20 housings can be found on page **325-326**
- > Variantool-N drilling jig for drilling series-drilled holes for connecting bolts shown on page **322**
- > Rafx-20 housings with and without dowel shown on pages **310-311**