

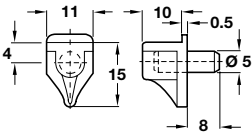
\*Load carrying capacity applies to 4 shelf supports bearing an evenly distributed load  
Testing was carried out according to DIN EN 1727  
"Mechanical safety requirements for shelf supports"

**A Shelf support, plug in**

- With galvanised steel pin
- For Ø 5 mm hole
- Load carrying capacity 60 kg\*
- Plastic

Finish	Cat. No.
White	282.27.705 <b>Re-instated</b>

Order qty: Multiples of 1000 pcs

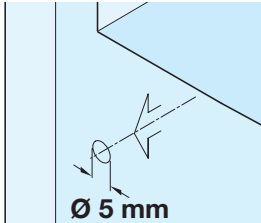
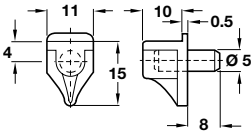


**B Shelf support, plug in**

- With galvanized steel pin
- For Ø 5 mm hole
- Load carrying capacity 60 kg\*
- Plastic

Finish	Cat. No.
Transparent	282.27.401 <b>Re-instated</b>

Order qty: Multiples of 100 pcs



\*Load carrying capacity applies to 4 shelf supports bearing an evenly distributed load  
Testing was carried out according to DIN EN 1727  
"Mechanical safety requirements for shelf supports"

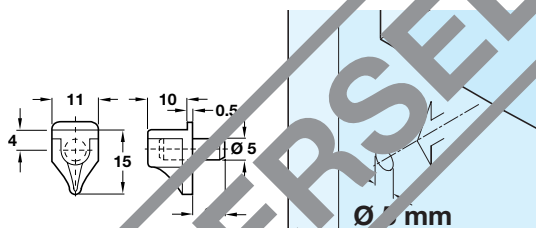
### C Shelf support, plug in

- With galvanized steel pin
- For Ø 5 mm hole
- Load carrying capacity 60 kg\*
- Plastic

Finish	Cat. No.
Transparent	282.27.401

Order qty: Multiples of 100 pcs

**Re-instated**



SUPERSEDED