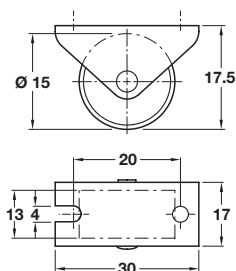


CASTORS

CASTORS WITH Ø 15 AND 25 MM WHEELS



Fixed castor, special use, Ø 15 mm wheel, plate fixing

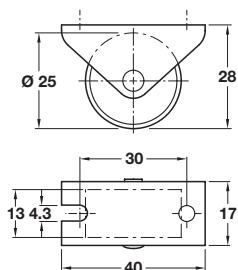


- > Fixed castor; without swivel
- > If mounted wheel uppermost, can be used as conveyor system
- > Chromatized galvanized steel housing, hard plastic wheel
- > Order qty: 1 pc



Wheel Ø	Load capacity	Without brake
Ø 15 mm	15 kg	661.23.322

Fixed castor, special use, Ø 25 mm wheel, plate fixing



- > Fixed castor; without swivel
- > If mounted wheel uppermost, can be used as conveyor system
- > Chromatized galvanized steel housing, hard plastic wheel
- > Order qty: 1 pc



Wheel Ø	Load capacity	Without brake
Ø 25 mm	20 kg	661.23.304