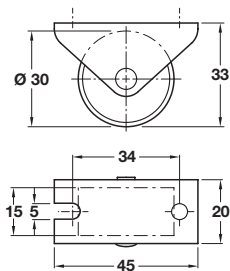


## Fixed castor, special use, Ø 30 mm wheel, plate fixing

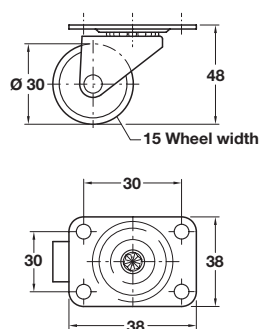


- > Fixed castor; without swivel
- > If mounted wheel uppermost, can be used as conveyor system
- > Chromatized galvanized steel housing, plastic wheel
- > Order qty: 1 pc



| Wheel Ø | Load capacity | Without brake |
|---------|---------------|---------------|
| Ø 30 mm | 25 kg         | 661.23.313    |

## Swivel castor, special use, Ø 30 mm wheel, plate fixing



- > With 38 x 38 mm mounting plate
- > Galvanized steel housing, black plastic wheel
- > Order qty: 1 pc



| Wheel Ø | Load capacity | Without brake |
|---------|---------------|---------------|
| Ø 30 mm | 30 kg         | 662.03.861    |